

BePureHome



The
STATEMENT
collection



Socials

Are you also a fan of the Statement? Share your Statement with us via **#bepurehome** and get featured on our social media channels! The collection can be combined in various ways and fits into many different interior styles. The Statement has endless styling options! Looking for more inspiration? Follow us on Instagram via **@bepurehome**

Making a STATEMENT

IT'S ALL IN THE NAME! MAKING A STATEMENT IS EXACTLY WHAT THESE SOFAS AND ARMCHAIRS DO! THE STATEMENT COLLECTION IS STURDY, PURE AND TIMELESS.

The first item in the Statement collection was the recycled leather sofa. The designers of BePureHome wanted to create a sturdy sofa in a smooth and sleek design. A sofa with great comfort and a real eyecatcher in your home. And it certainly was, because after the launch of the recycled leather sofa, it was extended with various fabrics and models.

The collection has grown considerably. The collection not only contains sofas such as the corner sofa, 3-seater, 4-seater and 4-seater XL, but also hockers, armchairs and elements. The element has recently been added to the collection. This can be used to enlarge the statement sofa. The models are available in 6 different fabrics and in 17 different colors. The latest addition is the flat rib: a soft, luxurious fabric with a velvety feel, which makes this fabric a perfect match for the Statement collection. Make a statement!



@thuis.bij.naomi



@sannemortimer_home



@rowloves



@ashleybakx

Velvet

VELVET

The Statement velvet series has a luxurious look and is available in 3 beautiful colors. The fabric feels soft and has a nice shine. The material is made of 100% polyester and has a full and heavy quality. The material is suitable for intensive use. In addition to the stylish design the velvet fabric remains beautiful for a long time and it is, to the surprise of many, a very easy fabric to maintain.

MAINTENANCE

Small stains can be removed easily with an absorbent cloth. Larger stains can easily be removed with a mild detergent and a microfiber cloth. If necessary, use a hair dryer to quickly dry the stain. Dry with care to prevent heat damage. The fabric can then be brushed with a velvet brush. This velvet brush is good for weekly maintenance. Impregnation is not recommended. If this is deemed necessary, it is at your own risk.





Recycle leather

RECYCLE LEATHER

Recycle leather has a very unique look and is, because of the use of residual leather, a sustainable choice. The collection contains two types of recycled leather. The recycled leather in the dark grey color consists of 70% real leather fibers and 30% polyester. The cognac colored version consists of 35% real leather fibers and 65% polyester. The fabric is made up of two components: the base layer consists of recycled genuine leather, which gives a natural appearance. The top layer is a polyester coating which protects the fabric and prevents unevenness. This makes it a sturdy combination fabric.

MAINTENANCE

Clean the fabric with a damp cloth. Use a neutral soap to remove stains and wipe briefly with a damp cloth. Do not rub, but dab! The rubbing can cause spots in the fabric. Direct sunlight always causes discoloration, so always try to prevent this. Discolored recycle leather never regains its original color. Recycle leather cannot be treated with grease for leather.



Suedine

SUEDINE

The black items in the Statement series are available in a suede fabric. This beautiful fabric has a suede look and is timeless because of the black color. This Statement line is available in all versions: in an armchair, corner sofa, 3-seater sofa, 4-seater (xl) sofa, element or hocker.

MAINTENANCE

Remove house dust and other small pollutions by vacuuming at the lowest setting, using a soft hair attachment. Do not use aggressive cleaning products. These could damage your new furniture fabric. Immediately remove stains with a soft cotton cloth by using the cloth in a circular motion, working from the outer edge inwards. Before using cleaning and care products, always test them on a hidden part of the material.





Elephant Skin

ELEPHANT SKIN

The Statement Elephant Skin series is modern, chic and contemporary. Elephant Skin is a special fabric that is made with the newest technology. The skin resembles leather, but it is made from 50% nylon and 50% vegan leather in a warm beige/taupe color. The fabric feels great and becomes, depending on the use, softer.

MAINTENANCE

Clean the fabric with a damp clean cloth and use lukewarm water. Do not rub, but dab in one direction. The fabric has not been tested for additional treatments and we discourage impregnating.



Bouclé

BOUCLÉ

This material is very on trend and perfectly fits in the trend of soft materials and 'teddy'. The fabric is available in five colors: beige, nougat, butter, coffee and chestnut. The fabric is soft and has an elegant texture that immediately brings warmth into your home. A very cuddly fabric!

MAINTENANCE

Stains? Clean the fabric with a soft cloth. Do not rub. Most liquids can be removed by using a damp clean cloth and lukewarm water. Use the cloth in a circular motion, working from the outer edge inwards.





Flat rib

FLAT RIB

The Flat rib fabric is the latest addition to the Statement series. This version is available in five atmospheric colors: warm green, taupe, clay, rock and graphite. The fabric feels soft and has a luxurious color shade. The unique weave gives the fabric a full structure and a velvety look.

MAINTENANCE

For stains, clean the fabric with a damp towel. This way the towel will absorb the stain. When the towel is saturated, repeat this process until the stain no longer bleeds. Leave the last towel on the stain until the towel has dried up. Please note: rubbing causes the stain to soak into the sofa. Rubbing is therefore highly discouraged.



The **STATEMENT** collection is available in

Recycle leather



Cognac-09

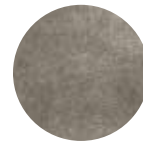


Grey-02

Suedine

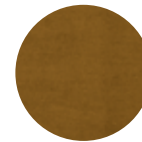


Suedine black-17



Taupe-12

Velvet



Honey yellow-14



Dark Green Hunter-156



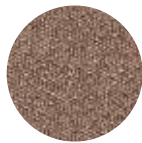
Elephant Skin-105

Elephant Skin

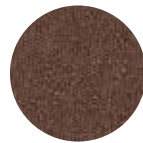
Bouclé



Beige-B



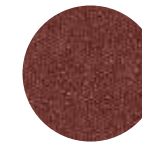
Nougat-N



Coffee-K

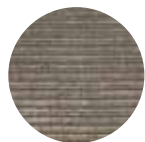


Butter-U

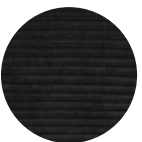


Chestnut-C

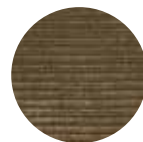
Flat rib



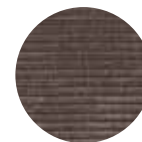
Clay-L



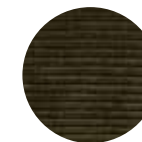
Graphite-G



Rock-R



Taupe-T

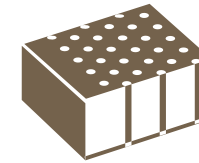


Warm green-W



STATEMENT







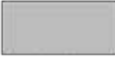
extra comfort

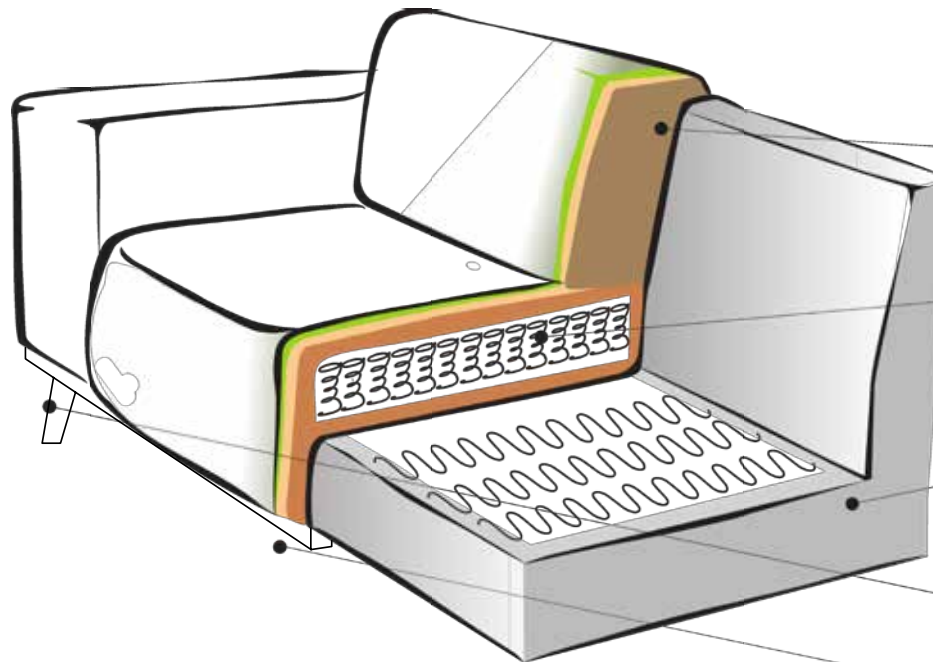


Cold foam filling



Bonnell spring block

-  Textile
-  HR foam
-  Regular foam
-  Synthetic batting
-  Zig-zag springs
-  Bonnell spring block
-  Wooden frame



Backrest

HR foam 23/13 kg/m³, synthetic batting 250 g/m², textile

Seat

Bonnell spring block, regular foam, synthetic batting 250 g/m², textile

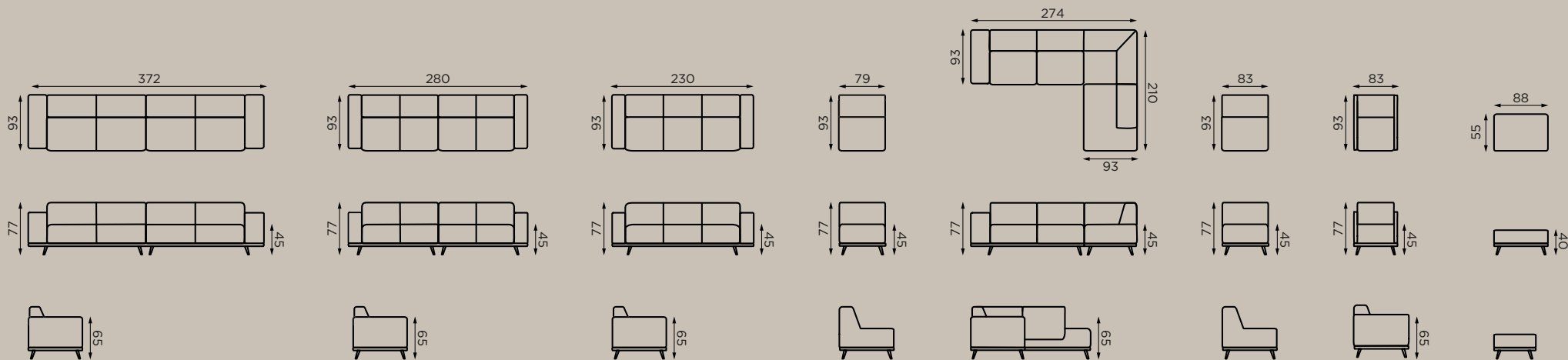
Frame

Solid wood, chipboard, hardboard, plywood, regular foam, zig-zag springs, synthetic batting 250 g/m², textile

Feet height 15,5 cm

Wooden frame 30x30 mm, birch





PLACING	XL 4-seater sofa 372 cm	4-seater sofa 280 cm	3-seater sofa	1-seater element	Corner sofa L&R	Chair	Armchair	Hocker
DIMENSIONS HxWxD (cm)	77x372x93 cm	77x280x93 cm	77x230x93 cm	77x79x93 cm	77x274x93/210 cm	77x83x93 cm	77x72x93 cm	40x80x55 cm
ARMREST HEIGHT (cm)	65 cm	65 cm	65 cm	-	65 cm	-	66 cm	-
ARMREST WIDTH (cm)	24 cm	18 cm	18 cm	-	24 cm	-	6,5 cm	-
SEAT DEPTH (cm)	63 cm	63 cm	63 cm	63 cm	63 cm	60 cm	60 cm	-
SEAT HEIGHT (cm)	45 cm	45 cm	45 cm	45 cm	45 cm	45 cm	46 cm	40cm
SEAT WIDTH (cm)	312 cm	244 cm	195 cm	79 cm	218 cm	83 cm	59 cm	-
MATERIAL LEGS	Birch	Birch	Birch	Birch	Birch	Birch	Birch	Birch
FOOT HEIGHT (cm)	15,5 cm	15,5 cm	15,5 cm	15,5 cm	15,5 cm	15,5 cm	15,5 cm	15,5 cm

BePureHome



Statement corner sofa
Velvet honey yellow
378655-14

Artnr: 372004-SE



8 714713 14646 8